

xiaomi

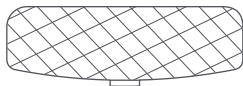
Smart Pet Fountain Filter Set User Manual



Product Overview

Read this manual carefully before use, and retain it for future reference.

Package Contents



Filter × 2



Pre-filter Unit × 2



Water Pipe × 1



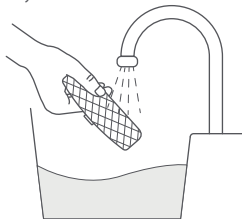
User Manual × 1

Note: Illustrations of product, accessories, and user interface in the user manual are for reference purposes only. Actual product and functions may vary due to product enhancements.

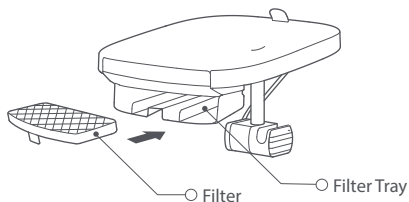
How to Install

Filter

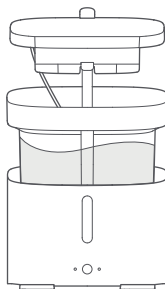
Note: Before using the filter, rinse it with clean water for two minutes to remove the floating carbon powder generated by the collisions of the activated carbon during transportation.



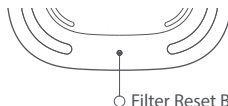
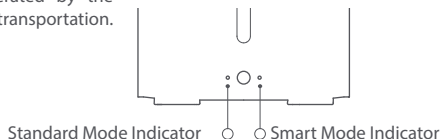
1. Rinse the filter with clean water for two minutes to remove the floating carbon powder generated by the collisions of the activated carbon during transportation.



2. Install the filter into the filter tray.

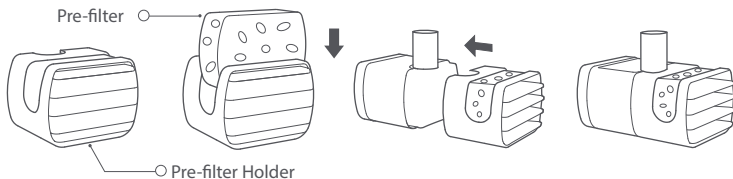


3. Put the cover back onto the water tank.



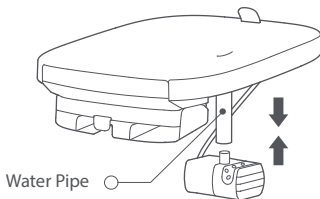
4. Press and hold the filter reset button at the bottom of the pet fountain for two seconds. When the mode indicator turns white, the remaining service life of the filter is reset.

Pre-filter Unit



Put the pre-filter into the pre-filter holder, and then install the holder onto the water pump.

Water Pipe



Connect the ends of the water pipe to the cover and the water pump.

Note: It is recommended to replace the filter, the pre-filter, and the pre-filter holder every month, and replace the water pipe every two months. Thoroughly clean the parts including the water tank, the cover, the filter tray, the filter, the pre-filter, and the water pump at least every seven days.

Specifications

Name	Xiaomi Smart Pet Fountain Filter Set	
Model	XWFE01MG-GL	
Compatible With	Xiaomi Smart Pet Fountain	
Net Weight	18.5 ± 2 g (each filter)	
	5.0 ± 1.5 g (each pre-filter unit)	
	5.0 ± 1.5 g (water pipe)	
Item Dimensions	120 × 40.5 × 18.6 mm (each filter)	
	37 × 29 × 26 mm (each pre-filter unit)	
	φ12 × 70 mm (water pipe)	

Made in China

Manufactured for: Xiaomi Communications Co., Ltd.

Manufactured by: Beijing Kitten&Puppy Technology Co., Ltd.

(a Mi Ecosystem company)

Address: Room Q-101, Floor 2, Q Area, Anning Zhuang Back Street, Haidian District, Beijing, China

For further information, please go to www.mi.com

Importer:

Beryko s.r.o.

Pod Vinicemi 931/2, 301 00 Plzeň

www.beryko.cz